



epaCUBE®

# Synchronizer™ from epaCUBE®

A central platform to manage and synchronize product and supplier information across the extended enterprise

epaCUBE Synchronizer enables companies to evaluate vendor changes in item information before processing those changes into production. It is a powerful solution that cleanses and improves data quality, dramatically increases productivity, and streamlines integration with internal systems and outside trading partners.



Possessing thorough on-line audit abilities of all vendor supplied data, Synchronizer will help to comply with Sarbanes-Oxley legislation in ways not otherwise possible.

## Product Event Manager

Synchronizer's Product Event Manager incorporates user-defined cleansing rules and process automation to ensure data conforms to company-specific standards.

Workflows can be tailored to key user roles, such as Category Manager, Supplier Account Manager, Supervisors, Buyers, and Pricing Managers, that correspond to precise product information or attributes.

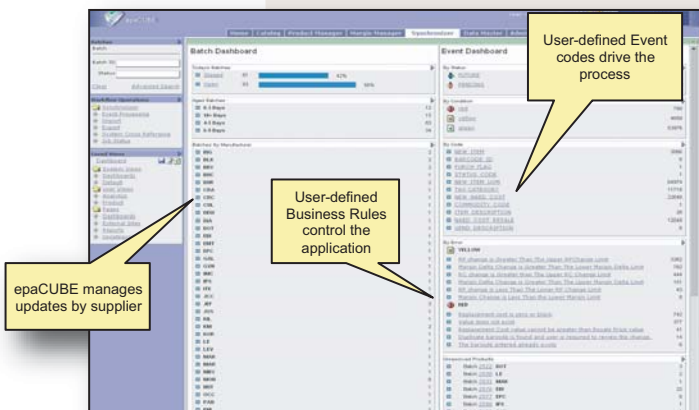
Synchronizer's rule engine includes powerful analytics that evaluate the impact of each change. The alert engine measures the effect of a change on the enterprise data and notifies the appropriate user to exceptions for proper handling.

## Enterprise Product Repository

Synchronizer provides a flexible, extensible, out-of-the-box product information management solution utilizing our Flexible Data Model or integrated into your existing application portfolio utilizing our Virtual Product Repository.

## Product Information Gateway

Synchronizer's Product Information Gateway supports standard interchange formats as well as product content services like UCCnet, Trade Services (PFMS, eDataFlex), and IDEA (IDW, IRD).



Built-in workflow guides users through the process while the transformation engine automatically populates the enterprise product repository. A syndication engine rapidly filters and distributes customized versions and formats to any number of internal or external audiences.



epaCUBE®

# Data Cleanser™ from epaCUBE®

A graphical solution that takes the challenge out of Item Master Consolidation, and simplifies the tasks of Data Cleansing and Item Conversions.

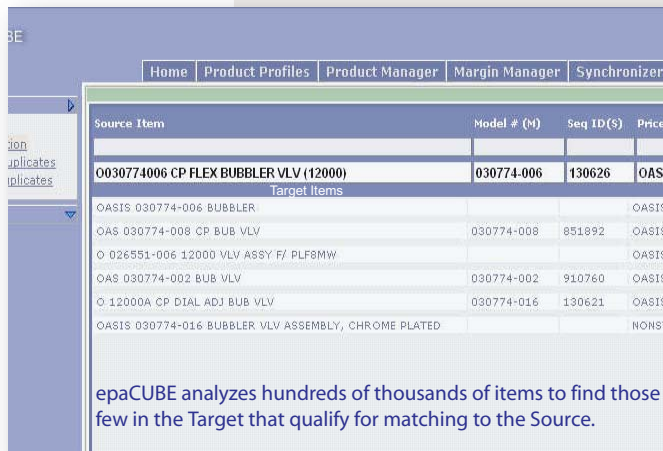
epaCUBE Data Cleanser enables companies to easily find common items and merge disparate data from multiple item masters into one, even when the standard cross-references are not in use (UPC, Vendor Part Number, etc). Whether your company is consolidating multiple legacy systems into an ERP, or acquiring other companies and assimilating their systems into yours, epaCUBE Data Cleanser will add levels of efficiency and accuracy not otherwise available.



## Product Recognition Engine

Data Cleanser first identifies all duplicate items for elimination, then crunches thru tens of billions of numeric and character-string comparisons between Source and Target Systems to find the most likely opportunities for matching items.

Take advantage of epaCUBE's browser based architecture to share the workload, allowing multiple users to operate all over the enterprise - each working their specifically assigned item groups.



## Data Conversion Workflow

All relevant fields from the Source System are identified and established within epaCUBE. These fields are then mapped to the Target System, a process ensuring that once an item is matched or identified as new, item data is edited and corrected. epaCUBE's Item Completeness Rules ensure that cleansed Source Data is properly converted to the new format, missing data is input, and complete item information is transferred to the Target System.

epaCUBE presents all potential matches, ranked by confidence level, for the user to decide which Target item matches the Source item in question. If no exact match can be determined, then the Source item is recognized as new, and workflow guides the user thru processes ensuring that all item information available is accurate, and that all required missing information is identified.

Once all items are matched or identified as new, epaCUBE synchronizes the Target System with all appropriate maintenance performed on the Source System since the beginning of the item consolidation process.

The end result is a single Item Master with all duplicate items removed, item data complete and up-to-date, and a degree of accuracy seldom achieved with item information.

## Data Mapping Utility

Sophisticated enough to handle even the I.T. professional's more complex data transfer requirements, while user-friendly enough for the novice business user to master.



The easiest way we know of to move data from one system to another, from flat files into a system, or to generate flat files for complete portability.

Transformation functionality can be further enhanced by the use of simple Microsoft Excel, Access, or Visual Basic commands

Built-in wizards support the transformation of data with point-and-click functionality covering:

Text Case (UPPER, lower, Proper)

Field Length

Parsing

Character Padding

Left, Right, Mid functions

Rounding

Convert Data Types

Joining Multiple Fields

Default Fields / Values

Field / Value to use when chosen field is blank (null)

Cost Cascades...Aligning Price and Qty Break data with target system configuration

Work with aggregate values, such as Min, Max, Avg, First, Last...

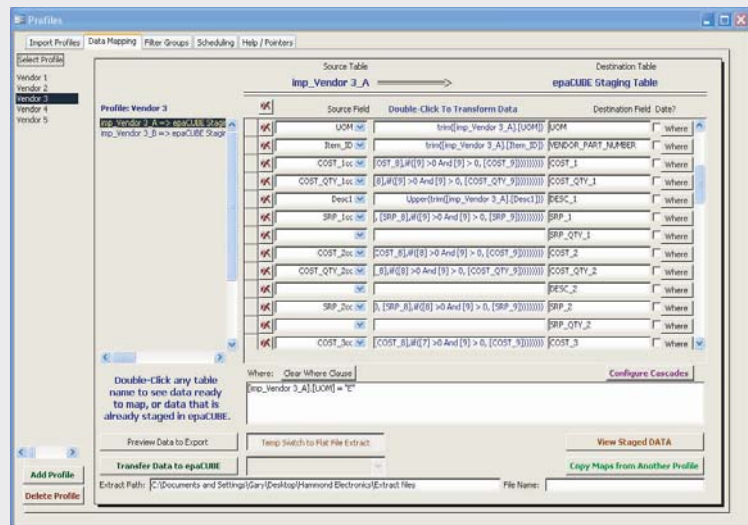
With multiple values available, work with only the current effective date, next effective date, earliest effective date, etc.

Fill blank fields with values from previous, valid records

Character Stripping

Character Substitution (Replace)

and More...



Supports any ODBC compliant system

Transports data / creates flat files to and from:

- Fixed Length Files
- Delimited Files
- ODBC connected tables
- ODBC Pass-thru queries\*
- XML / XSD Tables
- Excel (Multiple worksheets concurrently)
- Access databases
- User-defined queries\*

\* Pass-thru and user-defined queries only support one-way data transfers.

For more information contact:

Your Infor Account Manager

or

Randy Hughes, VP of Sales & Marketing

(719) 930-4074

rhuughes@epacube.com